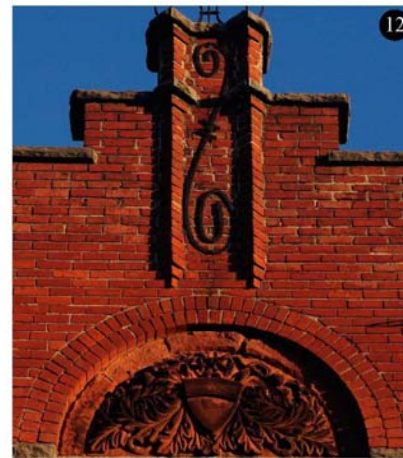


# 1<sup>st</sup> Annual Downtown Cortland Historic Walking Tour Contest

All of the buildings/homes below are in the Cortland Downtown Historic District or within walking distance. The areas are located from North Main St. to the intersection of Tompkins & Port Watson Streets; North Church St. to Port Watson St.; Intersection of Tompkins St. & Main St. to James St.





1<sup>st</sup> Annual Downtown Cortland Historic Walking Tour Contest

Submission Sheet

Fill out the following 12 lines with the answers to the corresponding numbered photos on the architectural features collage. Acceptable answers include: Street name & number or common name of the building or home. (e.g. 44 N. Main St. or St. Mary's Church) All submissions should be delivered to CDP located at 9 North Main St., Cortland, NY on or before August 31<sup>st</sup> 2009

See you Downtown!

- 1. \_\_\_\_\_
- 2. \_\_\_\_\_
- 3. \_\_\_\_\_
- 4. \_\_\_\_\_
- 5. \_\_\_\_\_
- 6. \_\_\_\_\_
- 7. \_\_\_\_\_
- 8. \_\_\_\_\_
- 9. \_\_\_\_\_
- 10. \_\_\_\_\_
- 11. \_\_\_\_\_
- 12. \_\_\_\_\_